



**Belleville Wix
Academy**



Welcome to Belleville Wix Academy

School Tours



Quality First Education Trust

Welcome

Welcome to Belleville Wix Academy and thank you for your interest in our school.

Choosing the right school for your child is one of the most important decisions you will make as a parent, so I am delighted that you have accepted our invitation to visit BWA and see first-hand what we have to offer.


Belleville Wix Academy is a very successful, vibrant and inclusive school in Battersea. We are part of the **Quality First Education (Q1E) Trust**, a multi-academy primary Trust of four schools which was established by nearby Belleville Primary School. In October 2019, we had our first Ofsted inspection as a new school and were delighted at the outcome of Good overall with an **Outstanding EYFS**.

We have a unique bi-cultural ethos, having shared our site with École de Wix for over 20 years. École de Wix is a French primary school annexed to the Lycée Français Charles de Gaulle in South Kensington. Together we offer three streams on our site: an English stream, a French stream and an English/French bilingual stream - established in 2006. Our sense of shared community is enhanced by building routine opportunities for all children onsite to play together, eat together and wherever possible, learn together. All children wear the same, simple uniform, which contributes enormously to the children's sense of togetherness and belonging.

As a staff team, we have a **relentless drive for improvement, excellence and equality**, delivering a quality first education to all the children in our care. We believe in doing **'whatever it takes'** to help every child succeed. We are all committed to the development of every child at our school; our priority is to ensure that your child is safe, and flourishes during their time with us, in partnership with you – the most important people in your child's life. Establishing and maintaining a good working relationship with you is extremely important to us. We do this through being available to speak with daily, offering workshops throughout the year and sharing resources that you could use to support your child at home as well as termly parent teacher meetings.

Our staff have access to a wealth of expertise through the support offered by the Directors of the Q1E Trust and their close working partnership with the Belleville staff. Every week,

Ofsted say: Pupils enjoy coming to this school. Children thrive because they are well cared for. Each child is valued, well known by staff and given the help they need to succeed. An outstanding start in the early years prepares children exceptionally well.



the teachers in each year group, across all trust schools, come together to plan the teaching and learning and talk about pedagogy. Our professional development of staff is exceptional which supports our aim of delivering a consistent and high-quality educational provision for all our pupils.

Children at BWA are offered an array of opportunities to thrive and to find a passion for things that matter to them personally, as a unique individual. Every day I have the great privilege of being surrounded by happy children who love coming to school and feel safe. They really do love to learn both in and out of the classroom and I am very proud of the manner in which everyone at BWA works together to create such positive experiences for every child. Every opportunity to enhance learning is taken. We have a great programme of guest speakers, visiting specialists, going on trips, including a residential in year 6, taking part in sporting competitions and festivals with other schools. Every child is offered the opportunity to learn to play an instrument and play in a musical ensemble.

Our pupils leave BWA as happy, confident and well-rounded individuals, ready to face the challenges ahead. They **achieve well beyond the national average**. Our Year 6 leavers go on to a wide range of state and independent secondary schools, including those with selective streams and scholarships.

To support working families, wrap around care is available for all children from 7:30am through to 6:00pm. We also offer a wide variety of extracurricular clubs on our shared site both before and after school.

We welcome children from throughout the local community and we are ready and experienced to help your child settle in quickly, whether they join us in Nursery, Reception, or further up the school.

We are very happy to answer any questions that you may have about joining us, whether about the admissions process or about any aspect of the school. Please feel free to drop in and speak to someone in the school office, or contact us: **admin@bellevillewix.q1e.org.uk** or **0207 228 3055**.

We very much look forward to welcoming you and your child to Belleville Wix Academy.

Séana Henry
Headteacher

Our values

Belleville Wix Academy's values (for children and staff) are represented by the word CARE:

Considerate: being caring, polite and fair; understanding and encouraging others.

Articulate: listening, communicating well and expressing ourselves.

Responsible: taking responsibility ourselves and others, valuing leadership and teamwork.

Effort: the importance of participation, perseverance and resilience.

Our aim is that all children...

...are safe. Our environment is carefully considered with safety first. We place great importance on how safe the children feel in their relationships with school and our teachers. We are a "telling school" – children are encouraged to talk to an adult if they have any worries.

Ofsted say: Pupils' safeguarding needs are met well. Pupils learn about how to keep themselves safe in different situations, including when they are online. They feel safe and well cared for.



...are excellent learners. From the very beginning, we encourage children to develop independence, and to learn how to listen and work with others. We talk about 'Excellent Learners' throughout the school, using child-friendly language to develop good attitudes to learning – including learning from mistakes, helping others and not giving up.

Ofsted say: Pupils have very positive attitudes to their learning. They said learning is fun and they are keen to do well. They show pride in their work. The 'excellent learner' approaches help pupils develop self-confidence and respect.

...have excellent social and emotional skills. Working with others brings challenges, especially for the youngest children. We focus on helping children develop the skills they need to build and maintain friendships, to recognise and regulate their emotions, and to understand and manage change.

Ofsted say: Leaders place much emphasis on pupils' personal development. They learn how to get on with each other and be confident learners.

... achieve and succeed. Children thrive at Belleville Wix. We follow children's interests to engage them in learning, balancing this with exposing them to new, exciting, hands-on experiences.

Behaviour

We have very high standards of behaviour, which are achieved through high expectations and a calm, learning-focused atmosphere. We consistently encourage children to reflect on whether they are 'making the right choice'. Each class has a class behaviour system, with awards for good behaviour.

Ofsted say: Pupils behave well and get on with each other. From the youngest in the Nursery, children are taught what is expected of them and how to manage their own behaviour. This sets them up well for their future lives.

Our Curriculum

Belleville Wix offers a carefully structured, broad and balanced curriculum throughout the school. We keep an appropriate focus on the core subjects of English and Maths, whilst also ensuring that all children benefit from a rich and diverse range of topics.

We follow the National Curriculum for all core and foundation subjects, but we extend children's learning far beyond its requirements. Our 'LEARN' approach puts **Learners** at the heart of an **Engaging, Ambitious, Relevant** and **Nurturing** curriculum. We want children to experience a rich, rewarding education where they achieve and succeed every day.

Extra support is provided for all pupils as they need it, in order to flourish at BWA. Constant assessment takes place to make sure that work is pitched at the right level for the pupils in every class.



Core Subjects

We teach English and Maths in every class, every day, with additional dedicated reading time.

A focus on high-quality, engaging literature is at the root of reading and writing at Belleville Wix. The structure of our curriculum, and our carefully chosen variety of core books, ensure that children have an excellent reading diet and support the development of excellent writing.

We have a highly structured Maths curriculum. We use the Maths – No Problem! scheme, rooted in the high-performing Singaporean 'mastery' approach. We always use real resources to solve real problems, making learning engaging and relevant.

Science at Belleville Wix takes an enquiry approach, to develop scientific thinking. We focus on hands-on exploration and discovery, with an emphasis on the precise use of scientific vocabulary. Exciting, contemporary science projects in all year groups allows children to explore engaging, relevant themes and questions.

Wider subjects (such as History, Geography and Religious Education) cover a broad spectrum of local, national and worldwide topics, within and beyond the National Curriculum. We develop knowledge and understanding alongside skills of enquiry and interpretation. We engage children in global issues, such as climate change, pollution and pandemics. Our curriculum has been developed with subject specialists, drawing on subject associations and much research.

We build in exciting first-hand experiences wherever we can - exploring artefacts, talking to residents, and making the most of being in London! Children go on trips to world-class institutions such as the Museum of London, the British Museum, art galleries, Royal Parks and the Houses of Parliament.

Specialist subjects

We have specialist teachers for Music, Art, PE, Dance, Gymnastics, Swimming and French. We are very proud of the excellent provision in these areas and ensure we have a vibrant, progressive as well as ambitious curriculum for all subjects.

Ofsted say: Leaders and staff are determined to ensure that every pupil is provided with the best education possible. The curriculum covers a rich and broad range of knowledge. Pupils achieve well in reading, writing and mathematics. Provision for reading and mathematics is exceptionally strong. Specialist expertise in music, dance, PE and French leads to pupils learning well and enjoying these subjects.



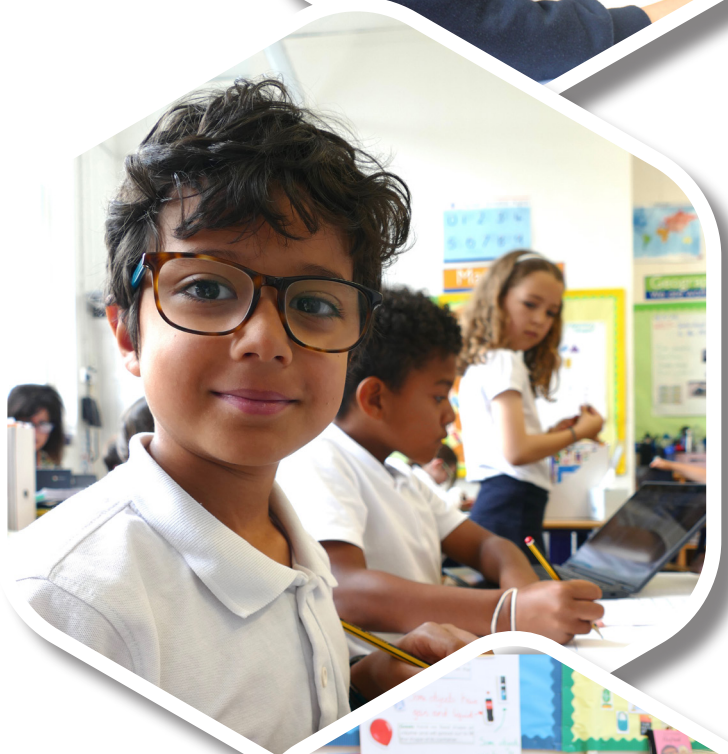
Our Two Streams

English stream

We offer 30 Reception places each year in our English stream. This stream is led by Belleville Wix Academy and teaches the English National Curriculum.

Bilingual stream

Our bilingual stream is led jointly by Belleville Wix Academy and École de Wix. Both the French and English National Curriculums have been used to create our unique curriculum offer. Pupils in this stream are taught in a two-way immersion structure, with English and French provision on alternate weeks (i.e. they are taught in English by a Belleville Wix Academy teacher one week, and then taught in French by an École de Wix teacher the following week). There are 28 places in each bilingual stream class. 14 are registered with Belleville Wix, and the other half are registered with the Lycée Français Charles de Gaulle.



Applying for a place at Belleville Wix Academy

Nursery

Children start Nursery in the September of the academic year in which they will turn four.

Our Nursery is a nurturing, engaging space at the core of our "Outstanding" early years provision. Nursery applications are made directly to the school and you can download the application form on our website. We offer 26 full time equivalent places each year. Full time and part time places are available.

- Part-time places universal free 15 hours (Nursery 1: Monday – Wednesday lunchtime; Nursery 2: Wednesday lunchtime – Friday)
- Full – time places (30 hour funded places or additional 15 hours top up fee)

Reception

Children normally start Reception in the September of the academic year in which they will turn five.

Belleville Wix Reception offers 44 places to start in September 2025 (30 places in the English stream and 14 places in the Bilingual stream).

If your child was born between 1 September 2020 and 31 August 2021, you can apply to start in Reception in September 2025. Applications are made online, via Wandsworth Borough Council. To find out how to apply, please visit: www.wandsworth.gov.uk/apply-for-a-primary-school-place. Your application form must be received by **Wednesday 15 January 2025**. You will be notified of your primary school place by Wandsworth Council on Wednesday 16 April 2025.

Reception applications are prioritised as follows: Children with a Statement of Special Educational Needs or an Education Health and Care Plan (EHCP) which names the school will be offered a place. Remaining places will then be allocated in the following order of priority:

- Looked-After children
- Children with an exceptional medical or social need
- Children with a sibling at the school on the date of admission
- Children of staff at the school
- Children in order of straight-line distance from home to school.

For the latest admission information, please visit www.bellevillewix.org.uk/our-school/admissions/

Joining us after the start of the school year

We welcome enquiries from parents and carers who are considering moving their children to Belleville Wix after the start of the Reception year. We do have some places in higher year groups and our friendly office team can provide individual advice about vacancies and waiting lists.

Contact us

If you need any help with your application, would like to arrange a tour, or have any questions at all, please contact the Belleville Wix School Office on **0207 228 3055** or email admin@bellevillewix.q1e.org.uk

Ofsted say: Pupils are helped to settle in the school, regardless of when they start. An outstanding start in the early years prepares children exceptionally well.

