



Belleville Wix Academy

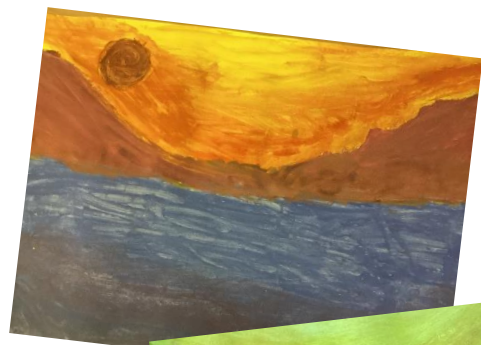
Year 5 Art

How do artists create atmosphere?

Year 5 pupils were fascinated to discover how artists create atmospheric landscapes by carefully choosing colours from the colour wheel. They learnt about split complementary colours and mixed their own tertiary colours, which they used in their final piece.



Pupils explored the work of Salvador Dali and how his paintings were representations of dreams. They tested compositions in their sketchbooks and made their own choices for their final piece.



The final piece was a dreamscape inspired by Dali. We called it either 'Nowhere' or 'Somewhere'. The landscape intends for the viewer to have an emotional response to the calm or vibrant colour combinations.

