

## [Newsletter for the week ending 12<sup>th</sup> January 2024](#)

I truly hope that you have all had a wonderful Christmas with family and friends. I wish you a very happy New Year for 2024.

On Monday, BWA staff had a super day of training onsite. We were all very excited when we saw the snowflakes gently fall past the windows and I understand we were not alone as I have heard that many of our pupils enjoyed the light flutter as well. It may have been bitterly cold on Tuesday morning at the school gate but it was a joy to welcome everyone back to school.

If you are looking for a Reception place for September 2024, please do remember the deadline for applications is the 15<sup>th</sup> January. We have been very privileged to show many prospective families around our school this week as they make their final decisions before submitting their form.



It can be hard for all of us to get back into the day to day routine after a holiday. The NHS-in-School Education Wellbeing Service is offering a Webinar for parents, exploring child sleep and routines which you may find helpful. You can sign up for one of the sessions by using this link: <https://www.eventbrite.com/cc/primary-parents-nhs-wellbeing-workshops-682309>

# L



## **LEARNERS** who are:

- inquisitive, resilient and have high expectations of themselves
- critical and creative thinkers who can solve problems and evaluate effectively
- confident, collaborative and articulate
- excellent learners



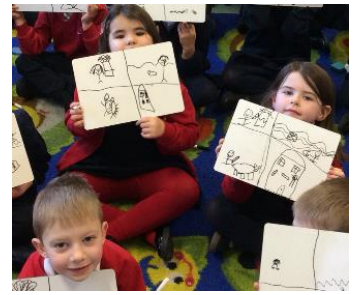
Is there a doctor in the house? There certainly is in Nursery as they started their People Who Help Us topic this term. This week, pupils are focusing on doctors and nurses, learning about the important work that they do and the special equipment that they use. Thankfully, they have lots of furry friends to practise their new knowledge on before they become expert enough to look after real people. Future doctors and nurses in the making here? Most certainly!

Pupils in RW have had a lovely return to school this week, diving straight into their Dinosaur topic. They found a dinosaur egg on their first day back and the class couldn't wait to see what was inside. Pupils have designed their own dinosaurs which they will build using junk modelling. One of the key highlights though has been working out how to unfreeze the dinosaurs that they have found stuck in ice.

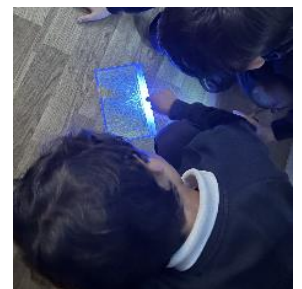


This week Year 1 have been learning about endangered animals and creating fact files about them. When researching, we discovered some of the reasons species have become endangered. To consolidate and summarise this learning, the students drew four different pictures showing a range of factors which lead to the endangerment of species. I was very impressed with the depth of their knowledge and how they applied this to the task, well done Year 1.

Pupils in 1B have been modelling excellent learning behaviours throughout the week. I was very impressed with their articulation during an English lesson when they had to describe the position of an object.



Year 2 had great fun launching their new Science topic 'How to survive and thrive? Animals including Humans', as they explored how our bodies change over time. Pupils enjoyed observing and discussing what changes had occurred from the time they were a new-born to the present day, and explored what different stages of life lay ahead. Year 2 also had a lovely time trying to match baby pictures with pupils in the class, as many have changed so much since they were that young.



Pupils in Year 3 had their classroom transformed into Tutankhamun's tomb this week. They had to search around the room to find hidden artefacts and then analysed what each object might have meant about life during Ancient Egypt.



Year 4 have started to explore the adventure story of Ernest Shackleton's expedition across Antarctica, whilst looking at this unique polar region in their Geography. Throughout the week, pupils have taken on the role of a member of the crew and envisioned the adventure that awaits them. They were able to showcase their new knowledge by writing a diary entry as their ship, the Endurance, left England.

In 4B, pupils started learning about community stakeholders. Stakeholders are a person or group of people with an interest in the local community. Some examples include: local community groups, neighbourhood watch, local councillors and the Mayor of London. Pupils researched the role of the Mayor of London, Sadiq Khan and learnt a lot about the role.



Pupils in 5B have started their R.E.W topic of Buddhism by exploring who the Buddha was and what influenced him. They also discovered two of the four Noble Truths which inform many Buddhists way of life. They considered the difference between wanting and needing, and through the lens of the Noble Truths, how 'wanting' can create suffering.



5LT's highlight this week was in PSCH when pupils discussed 'turning over a new leaf' in 2024. Everyone in the class set themselves a new target that they will strive to achieve in the rest of Year 5 and thought about how they are going to do this. Their teacher was very impressed with their maturity and articulation of their targets.

In 5S, pupils have started their new Science topic – Reversible and non-reversible changes. They are excited to start learning more about chemistry.



Year 6 began their 2024 learning journey by starting their new text for English: 'Ghost' by Jason Reynolds. The class have been enthralled by the gripping stories from the protagonist of the novel, Castle, and have written diary entries about a night that changed Castle's life forever. The book contains mature themes and the Year 6 students discussed these with sensitivity. They look forward to reading on, uncovering further details in Castle's recount.

## Excellent Learners

Congratulations to all our Excellent Learners this week.

<u>Excellent Learners</u> <u>Are Creative</u>			
Ilyan	RW	Liam	4B
Victoria	Y1	Aya	5LT
Douglas	1B	James	5M
Alex T	Y2	Sarah	5B
Ada	Y3	Shiheim	Y6
Raffy	Y4		



### Birthday Treats

When it is a child's birthday during the school term, parents and carers can choose to celebrate this special occasion by bringing in food to share with the class if they wish. This food is given out at the end of the school day so that parents and carers can decide if their child consumes it. If you do choose to bring in food for the class, we would really appreciate it if, in addition to nut-free, consideration could be given to other allergies, religious and dietary preferences, so that all children can share in the class celebration.



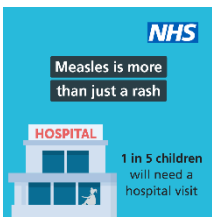
### Communication

Our [communication table](#) should signpost you to the right person to deal with any queries you have, no matter how small or trivial you think they may be.



### Nut Free School

Please remember that we are a Nut Free site. There are pupils onsite with allergies and we must all do our best to keep these pupils safe at all times when onsite.



### **Information on Measles / MMR vaccination – message from the NHS**

Measles cases are rising across the country, with over 102,000 children starting primary school in England being at risk of catching the disease. We are asking education settings to share key messages from the NHS about MMR / measles and how to get vaccinated.

The [Back to school MMR Guidance](#) from the NHS includes information to share, as well as example social media posts which can be found here: [NHS Vaccine Poster](#) and [NHS MMR](#)

[Poster](#).

Measles is highly infectious and if left unvaccinated nine out of ten children in a classroom can catch the disease if just one child is infectious.



### Prepared for the Day

Please ensure your child has suitable clothing in school. Getting outside remains very important at BWA and we plan to have both PE and play outside in all weathers.



### Dates to Remember

**Spring Half Term – Monday 12<sup>th</sup> February**

### **End of Spring Term**

- **English Stream** - Thursday 28<sup>th</sup> March at 1:45pm
- **Bilingual Stream** - Thursday 28<sup>th</sup> March at 3:15pm

Wishing you all a peaceful weekend.

**Miss Henry**

The proposed dates for the English Stream next year are set out below. Please note these may change. Once the Bilingual Term dates are agreed these will be shared with all families.

Belleville Wix term dates 2024-25 – ENGLISH Stream only	
INSET days	Monday 2 & Tuesday 3 September 2024
Autumn 1	Wednesday 4 September 2024 to Friday 25 October 2024
Autumn half term	Monday 28 October to Friday 1 November 2024
INSET day	Monday 4 November 2024
Autumn 2	Tuesday 5 November to Friday 20 December 2024
Christmas holiday	Monday 23 December 2024 to Friday 3 January 2025 (Bank Holidays - Wednesday 25 December, Thursday 26 December & Wednesday 1 January)
INSET day	Monday 6 January 2025
Spring 1	Tuesday 7 January to Friday 14 February 2025
Spring half term	Monday 17 to Friday 21 February 2025
Spring 2	Monday 24 February to Friday 4 April 2025
Easter holiday	Monday 7 April to Monday 21 April 2025 (bank holidays Friday 18 & Monday 21 April)
INSET day	Tuesday 22 April 2025
Summer 1	Wednesday 23 April to Friday 23 May 2025 (Bank Holiday Monday 5 May)
Summer half term	Monday 26 to Friday 30 May 2025
Summer 2	Monday 2 June to Tuesday 22 July 2025

**HAPPY NEW YEAR!!!** The PTA team wishes you all a brilliant 2024!

We look forward to further growing our fantastic school community with you this year



#### Upcoming PTA Events

Fri, 19 Jan 2024	Y3/Y4/CE1/CE2 Disco	5pm-6.15pm	Tickets are now available for purchase on Bigcartel
Thu, 8 Feb 2024	Valentine's Day bake sale	At pick-up (from 3.15 to 4pm)	Let's share the love!! Bakers can drop off their masterpieces at the PTA stand at drop-off in the morning (between 8.15 and 9 am) and the lovely cakes and treats will be available for sale at pick up time
Fri, 1 Mar 2024	Y5/Y6/CM1/CM2 Disco	5pm-6.15pm	Fourth and final disco! Tickets will be available in February
W/c 4 March 2024	Mother's Day special sale	tbc	Special sale to celebrate all the amazing mums! Exact date that week and further details tbc shortly
Mon, 25 Mar 2024	Easter bake sale	At pick-up (from 3.15 to 4pm)	Let's celebrate the last week of Spring term with festive treats! Bakers can drop off their creations at the PTA stand in the morning (between 8.15 and 9 am) and those tasty treats will be available for sale at pick up time



<https://www.easyfundraising.org.uk/causes/bellevillewix/>

We're excited to share a hassle-free way for you to support BWA every time you shop online.

Simply visit <https://www.easyfundraising.org.uk/causes/bellevillewix/> and sign up. By doing so, a portion of your online purchases from thousands of retailers will be donated to our school at no extra cost to you. Think of it as a small contribution that makes a big difference every time you shop!